



## **Moors for the Future Partnership**

### **Operational Plan 2015-2016**

**Including a review of 2014 –15 and a forward look for delivering legally committed contracts and expected areas of business development.**

**Authors: C Dean, S Davison, M Buckler, J Walker, L Turner**

**Date: 18 November 2014**





## Contents

	Page
1 Executive Summary	2
2 The Purpose of the Operational Plan	2
3 Look Back at 2014/15	3
4 This Year's activity – 2015/16	13
5 Look Forward – 2016/17	19
6 Look Forward – Business Development (Expectations)	21
7 Monitoring this Operational Plan	21
8 Developing Project Income	21

## **I Executive Summary**

This is the third annual Operational Plan produced by the Moors for the Future Partnership (MFFP). The Plan communicates to our funding partners and staff how we intend to deliver the agreed projects.

This strengthening of our business planning reflects the organisational changes made during 2012-13 to transform MFFP from a project delivery vehicle to a programme delivery vehicle. These changes have the support and backing of our accountable body, the Peak District National Park Authority, and of our many partners.

Over the past 12 years the MFFP team has successfully delivered a range of technical solutions that address our mission - **“to restore the quality of the South Pennine Moors, to improve its benefits as a quality water catchment area, a diverse ecological, recreational and agricultural resource which will be managed to ensure the enduring legacy of these benefits.”**

Over the past year, on behalf of 13 partners, we delivered 19 projects with a total project value in excess of £4.6m. The Partnership programme is at an interesting juncture - we are in a transition period with several projects completed in March 2015. At the time of production of this plan seven projects are continuing into 2015/16.

This year, **2015 - 16** we have a committed budget (to date) of £1.8m agreed with partners to deliver seven projects (some of these projects should be viewed as programmes due to their complexity, multiple sites and objectives) with an additional project value of £2.6m in the pipeline. In 2016-17 our operational plan covers the deployment of just under £4m (£1.4m contracted, £2.6m pipeline).

In our Business Plan 2013 – 2020 we address the bigger picture of how MFFP will develop the funding streams for further remediation and legacy management. We will produce updated Vision and Strategy documents and will be reviewing our suite of management documents over the next 12 months.

The continuing challenge for MFFP this year will be to ensure that the organisation has the capacity and capability to continue to deliver programmes over this transition phase. We are planning to continue the successful delivery of our programme of projects and our resource planning accounts for this.

## **2 The Purpose of the Operational Plan**

The purpose of the operational plan is to allow members of the Peak District National Park’s Audit Resources and Performance Committee to monitor overall programme progress and how the MFFP outcomes and projects together achieve PDNPA - and our other partners’ - objectives. In particular, it will be the business tool by which MFFP manages its annual activities to achieve our objectives:

- **Objective One – Awareness Raising**

*“To raise awareness and promote positive action for the conservation of the moorland landscape”*

- **Objective Two – Conservation Management**

*“To develop and deliver sustainable land management for these important upland resources, ensuring appropriate consideration of all of their benefits”*

- **Objective Three - Science**

*“To develop expertise for the sustainable management of moorlands ensuring that the programme is properly resourced with the capacity and capability to achieve this”*

### 3 Look Back at 2014/15 (this is a summary of highlights)

#### **Awareness Raising – achievements 2014/15**

##### **MoorLIFE**

To raise awareness of the EU funded MoorLIFE project and the importance of moorland biodiversity we:

- Launched the Be Fire Aware campaign and showcased an interactive fire-aware display and games – the first of its kind - at the Edale Moorland Centre and Derwent Visitor Centre, in the Peak District National Park. More than 40 people attended the launch including collaborators from the fire services, fire operations groups, academics and landowners.
- Updated and installed new educational panels at all of the Dark Peak and South Pennine interpretation sites including Crowden, Torside and Rishworth Common.
- Produced and uploaded a further four new podcasts covering moorland conservation techniques: how we apply lime, seed and fertiliser; geotextile application on bare peat; increasing diversity with plug plants and reintroducing *Sphagnum*.
- Filmed aerial footage of all of the MoorLIFE sites to show their condition after restoration works have been undertaken.
- Produced a promotional video for the project covering techniques used plus before and after footage of the conservation and science work undertaken across the five year project. This will be an invaluable communication tool for stakeholders. It enables the project and Partnership to promote the outcomes in a visual and easy to understand format.
- Generated web and social media updates.
- Promoted and held a MoorLIFE Seminar in Manchester – a seminar and workshops focussing on *Sphagnum* reintroduction . 100 delegates attended from academia, key conservation organisations, and the business sector. Latest research and findings on *Sphagnum* were shared and collated to feed into MFFP strategic plans.
- Issued press releases generating good news coverage both locally and nationally. Highlights include an article in Fire Times; interviews of the team filmed for a new BBC2 series, featuring the Pennine Way and inclusion of the MoorLIFE project on the Ecosystem Knowledge Network website.
- Developed four smartphone applications for people to identify and learn about life on the moorlands – MoorPLANTS, MoorWILD, MoorMOSS, MoorSIGHTS. All apps are also available to read online or download and cover plants; *Sphagnum* moss; wildlife and moorland features.
- Held a final project conference in the South Pennines to disseminate knowledge and outcomes of the project.

##### **Community Science Project**

This year the project team have established a new community engagement project to secure the future legacy of the South Pennine Moorlands by developing a programme of volunteer engagement activities and events; the volunteers will collect valuable scientific data to feed into national climate change initiatives and influence future land management plans.

We delivered several monitoring pilot projects with specialist steer from the MFFP science team and the Stockholm Environment Institute (SEI), York University, to successfully deliver phase I - proof of concept - including:

- Opportunistic moorland bird surveys
- 18 targeted seasonal bumblebee campaigns
- Set up long-term monitoring sites around Edale and Holme and developed strategic relationships and links with key moorland user groups
- Engaged, recruited and trained community volunteer groups through a series of engagement events
- Trialled and developed data collection using iRecord
- Set-up online and social media sites to engage and retain volunteers known as ‘moorcitizens’ and stakeholders

- Developed the delivery plan for the next three and half years (December 2014 to May 2018). The plan covers the volunteer experience and their development including volunteer role descriptions, a volunteer handbook and expenses policy, as well as opportunistic and targeted wildlife surveys and long-term moorland monitoring sites
- Submitted the Heritage Lottery Funded (HLF) bid for the delivery phase of the Community Science Project and were successfully awarded over £600k HLF funding in September 2014. In addition, we secured partner funding and potential funds from a local business
- Recruited the new Community Science Project Team: Project Manager, Communications Officer and Community Science Project Officer
- Secured a contract with SEI York University to develop and deliver surveys for Spring 2015.

### **Advocacy (meetings / initiatives) and events attended**

The team have represented the Moors for the Future Partnership and its interests at a wide range of regional and national meetings and initiatives (as delegates, technical advisors and / or steering committee members) including:

- Natural England Integrated Biodiversity Delivery Area Initiative;
- Expert panel: Natural England Project “Improving the Evidence Based Guidance Relating to Favourable Condition for Priority Habitats, SSSIs and SACs”;
- Peak District NE Ecosystem Service pilot in the South Pennines (phase 1 and 2);
- Defra multiple benefit demonstration catchments;
- South Pennines / Peak District Upland Monitoring Group;
- Dark Peak NIA Partnership monitoring meetings;
- South Pennine Moors Sustainable Land Management Group;
- Healthy Waterways Trust;
- Manchester and Pennine Waters forum;
- Peak District Fire Operations Group;
- SOURCE Project (Calderdale);
- SPM Sphagnum Technical Advisory Group;
- STEMnet (Science, Technology, Engineering and Mathematics Network);
- IUCN Peatlands UK;
- Upland Hydrology Group;
- Upland Monitoring Group.

### **Presentations (oral, posters)**

- Oral presentation to British Ecological Society Meeting of their Macroecology Specialist Interest Group (SIG) and Citizen Science SIG entitled ‘Citizen science and data deficits’.
- Three posters presented at the ‘Peatland Action: learning from success’ conference
  - Sphagnum Restoration using Beadamoss in the Peak District
  - Sphagnum reintroduction – current peatland restoration works and monitoring
  - A carbon audit of the MoorLIFE project
- ‘Market Stall’ at the NIA Annual event, London
- Manchester and Pennine Waters forum – ‘soapbox’ talk
- STEM Ambassadors – Year 10 enrichment day talk, Longdendale High School
- British Ecological Society Peatland SIG – ‘In the Bog’ conference
- Manchester Metropolitan University geography student visit; presentation to first year students
- Whaley Bridge Amenity Society –Introduction to work of MFFP
- National Parks Educators’ Conference
- Peak District Conservative Association (Glossop Branch) – Update on MFFP works
- Defra Life funding workshops
- Lunchtime seminar at Manchester Metropolitan University
- Sheffield Hallam University – evening Geography departmental seminar talk on work of MFFP and science programme
- Sheffield Hallam University – afternoon visit of Geography students
- ‘Science in the Park’ events, Peak District National Park

We continued to participate in the IUCN Peatland Programme UK Steering Group, as well as participating in workshops to develop an EU LIFE funded peatland Integrated Project bid. We presented Moors for the Future as a 'case study' to the EU in Brussels, showing synergies and conflicts between different EU Directives.

We also presented posters on the MoorLIFE carbon audit and ran sphagnum workshops at the Pennine Prospects Conference 2014 in Halifax including presenting posters on flood mitigation and clough woodland creation.

We have participated in Catchment Partnership workshops for the Derwent, Mersey, Don and Aire and Calder catchments.

### **Contributions to consultations / reviews / research**

- Environment Agency's River Basin Management Plans
- Environment Agency's Flood Risk Management Plans
- NELMS (New Environmental Land Management Scheme)
- IPENS (Improvement Programme for England's Natura 2000 Sites)
- Natural England's Peak District Long-term Monitoring Network Site
- Shaun Maskrey PhD: Looking at flood risk differently in Hebden Bridge
- Monitoring Indicators of Climate Change (Peak District National Park)

### **Events hosted**

A 'Catchment Monitoring & Management Workshop' in Sheffield in collaboration with Carbon Landscapes and Drainage Project in May. This scientific meeting looked at techniques for monitoring hydrology and dissolved and particulate concentrations of carbon and other elements in stream catchments.

We launched the second phase of our Making Space for Water Project in Manchester in September which was attended by 32 people representing land managers, academics, private companies and NGOs.

We have led field visits with the Chair of the Environment Agency, with land managers on behalf of Natural England and the National Farmers' Union, with the Upland Hydrology Group and for a variety of other interested projects from across the UK.

We developed and undertook training events for moorland owners on behalf of Defra, looking at land management for a range of ecosystem services.

### **Web/online**

- Produced a quarterly MoorNews e-newsletter for partners and stakeholders; covering news and project work with a special Tour de France themed edition in July 2014
- Introduced new social media guidelines
- Updated the Partnership website with news items, new project information; research news; posters and video pages to refresh content. Number of visits 23,000 (16,400 unique visits)
- Continued to refresh social media sites with updates via Twitter and Facebook to signpost users to website and further information / calls to action
  - Twitter followers: 2,362
  - Facebook likes: 360
- Created a Partnership Google+ page
- Published 100 Tweets in 100 days leading up to the Tour de France
- Commenced the transfer of the Peatland Compendium website to IUCN and agreed terms of engagement through Memorandum of Understanding. Therefore ensuring the continued development and use of this valuable site at a national level.

### **Media highlights**

Secured national and regional coverage of:

- Community Science Project and bumblebee events

- Be Fire Aware Campaign
- Audio Trails
- Pennine Way series on BBC2
- Lord Smith, Chair of Environment Agency visit.

### **Communication links**

We developed communication contacts with Peatland Restoration project (Catchment Restoration Fund), Clough Woodland Project, Yorkshire Water and Private Lands Project to increase awareness of Partnership outcomes and benefits.

### **Outputs**

#### **Reporting / publications**

- Kinder Catchment Project final report
- Woodhead Water Project final report
- Dark Peak NIA final report
- Making Space for Water final report
- MoorLIFE Project final report
- Ashop and Alport Catchment Restoration Fund final monitoring report
- Dark Peak NIA baseline cultural services report
- Moscar Science Project update report
- Trajectory of vegetation change report
- Trajectories of hydrological change - briefing note
- *A deliberative approach to payments for peatland ecosystem services* (2014) Mark Reed and Jasper Kenter. Report to MFFP as part of Making Space for Water report.
- *Sustainable management of peatlands: an ecosystem services assessment*. Jim Rouquette. Report to MFFP as part of making Space for Water report.
- *Peatland conservation at the science-practice interface*. Joseph Holden, Aletta Bonn, Mark Reed, Sarah Buckmaster, Jonathan Walker (MFFP), Martin Evans, Fred Worrall; in 'Peatland Restoration and Ecosystem Services – Science, Policy and Practice'. Cambridge University Press.
- *Evidencing the impact of moorland restoration work on SSSI condition status in the South Pennines*. MFFP report to Yorkshire Water and Natural England.
- Database of scientific data with INSPIRE standard metadata

#### **Collaborating partner outputs and outputs acknowledging MFFP support**

- Shuttleworth, E.L. Evans, M.G. Hutchinson, S.M. and Rothwell, J.J. (2014) Peatland restoration: controls on sediment production and reductions in carbon and pollutant export. *Earth Surf. Process. Landforms*.
- Harrison, C. (2014) Small Wind Turbines (SWTs) and bird activity around the South Pennine Moors Special Protection Area. Poster presented at the British Ornithologists' Union conference "Ecology and Conservation of Birds in Upland and Alpine Habitats".
- Martin-Ortega, J., Allott, T.E.H., Glenk, K., Schaafsma, M. (2014) Valuing water quality improvements from peatland restoration: Evidence and challenges. *Ecosystem Services* 9:34-43.
- Reed, M.S., Stringer, L.C., Fazey, I., Evely, A.C., Kruijssen, J.H.J. (2014) Five principles for the practice of knowledge exchange in environmental management. *Journal of Environmental Management* 146(15): 337-345.

### **Conservation and Land Management – achievements 2014/15**

The team has continued works on the following conservation and land management projects this year:

- MoorLIFE
- Yorkshire Water (YWS) SSSI Recovery Project
- Private Lands Project
- YWS Non-owned catchment Project



- South Pennines Commons Project
- Clough Woodland Project
- Peatland Restoration: Rivers Alport and Ashop (Catchment Restoration Fund)

The majority of the works in all of these projects continue to be remediating large-scale areas of bare and eroding peat, although other significant works are present.

## Project overviews

### MoorLIFE

Works continued on Bleaklow, Turley Holes, Rishworth Common and Black Hill. Follow up heather brash works were completed during winter 2014/15. Over 400 stone dams were constructed on Bleaklow this year. Works to apply *Sphagnum* mosses continued, with mosses applied to 587 hectares on Rishworth Common and Bleaklow in 2014/15. This included trials on 94.5ha testing different methods of application. We also planted 110,000 plug plants on Bleaklow and Woodhead. Lime, seed and fertiliser application continued across the project sites with 350ha being treated during the year.

### YWS SSSI Recovery Project

For five years Moors for the Future has been project managing work to bring Yorkshire Water's 11,500 hectares of Sites of Special Scientific Interest into favourable condition. Working closely with Yorkshire Water, Natural England, tenants, farmers, shoots and local authorities; the work has brought together stakeholders to find pragmatic, effective solutions based on good evidence.

In the 2014/15 financial year the work included:

- Dry stone walling, fencing and grip blocking on Snailsden Moor, Turley Holes, Soyland Moor and Rishworth Moor to enable sustainable, controlled grazing.
- A full survey of the drainage on Katty White's Allotment and Humberstone Bank Moor to enable effective rewetting in the coming years which will encourage a more appropriate species mix for blanket bog habitats.
- Manual and chemical control of the highly invasive and damaging *Rhododendron ponticum* on Snailsden Moor and Butterly Moor.
- Rewetting of Thurlstone Moor by blocking grips, (man-made drainage channels), with peat dams and plastic piling.
- Diversification of monoculture swards (primarily *Molinia caerulea*, a grass which dominates other species to the detriment of biodiversity and the recovery of blanket bog and dwarf shrub communities), through various techniques:
  - On Nab Water and Butterly flailing has reduced the depth and thickness of the molinia swards, so that in 2015/16 herbicide application followed by reseeding (and/or the planting of plugs) can diversify the species occurring within the grassland.
  - On Rishworth a new trial has been initiated to investigate a more cost effective solution by inoculating Molinia dominated areas with Sphagnum (11 species) after minimal site treatment (flailing and windrowing). It is hypothesised that the sphagnum will grow on these sites and therefore will add floral diversity to these sites while also directly contributing to the formation of active peat.
- Lime and fertiliser has been aerielly applied to Deanhead Moor and Soyland Moor, giving over 18 hectares vital assistance to heal bare peat by enabling locally native species to increase their growth and development.
- Wild fire is a significant threat to these fragile moorland habitats and this year work has continued to protect the moors through the cutting of fire breaks. Rishworth is one of the most arson-prone sites in the region and so this work has used records of previous burns to focus attention of areas most at risk.
- On Nab Water 200m<sup>2</sup> of scrapes have been dug to improve the habitat for birds.
- On Heptonstall, where over £300k has been spent in recent years to improve the moorland habitat, some old drain have actually been re-dug so that the farming commoners can access their land and manage their grazing stock which are vital for the long term success of the moor.
- Bracken management was undertaken in the north on the sites Katty White's Allotment, Humberstone Bank and High Woodale. 20ha were treated which prevented bracken from expanding to cover and out-compete more desirable blanket bog species.

- Archaeology: to ensure that our work does no harm to existing archaeological artefacts on site, surveys were conducted on Rishworth and Butterly and work plans were amended to prevent any damage. MFF liaised closely with the West Yorkshire Archaeological Service to ensure that no archaeology was damaged in the restoration of these sites.

### **YWS Non-owned catchment Project**

The Moors around Marsden, (owned by the National Trust), collect water which Yorkshire Water treats at Longwood Water Treatment Works. In response to rising costs at the treatment works, YWS has invested over £2million in the surrounding moorland to improve its ability to store and clean the water before it reaches Longwood. MFF are the expert advisors on moorland restoration for this project.

In the 2014/15 year this project has delivered:

- 520ha lime and fertiliser onto degraded blanket bog to encourage plant and seed growth
- 307ha seed to give a nurse crop to stabilise the bare peat
- 2500 bags of heather brash covering 125,000m<sup>2</sup> of bare peat also to stabilise it
- 81 stone dams, 161 plastic piling dams and 1,376 coir 'bales' to hold back sediment in the gullies and slow the flow of water off the moor.

This work was preceded by an archaeological survey of Close Moss, Pule, Bobus and Buckstones Moors to ensure all historic artefacts were protected.

### **Castleshaw**

NE requested MFF's assistance to deliver works to this piece of land which is adjacent to Close Moss, one of the NOC project's work sites. It has no known owner and the only known commoner had not the financial backing to deliver this work himself. The land was degraded moorland, on blanket bog, which was more economical to do as part of the wider package of work which MFF were already delivering as part of the NOC project. The tasks undertaken were:

- 734 bags of heather brash
- 160 coir "bales"
- 21ha lime, seed and fertiliser
- 15,000 plug plants
- 28 stone dams
- 23 plastic dams

### **Natural England Conservation Plan Project**

Works have continued to finish these plans, with new plans coming on board through the Private Lands Project.

- Deer Hill Moss – Works were completed on this site, with all heather brushing and gully blocking completed. The site was also treated with lime, seed and fertiliser.
- All final claims and submissions for the other plans were made during this year.

### **Peatland Restoration: Rivers Alport and Ashop (Catchment Restoration Fund)**

The works on this project are divided into 3 packages; MFFP are delivering packages 1 and 3. Works continued on this project with lime and fertiliser application (172ha on Kinder Scout and 1.2ha on Bleaklow). In addition *Sphagnum* application occurred over 78ha, with various techniques being undertaken in order to assess their effectiveness. This has included dense planting of *Sphagnum* within one micro catchment in order to understand whether creating a carpet of *Sphagnum* quickly is feasible and what impact it has on water quality and flow.

### **National Trust projects**

Works completed on behalf of the National Trust on their HLS agreements have included:  
 LSF Treatment on 6ha of Coldwell Clough  
 LSF treatment on 40ha of East Crowden  
 940 bags of heather brash on Park Hall

### **South Pennine Commons Project**

Work continued on the South Pennine Commons Project. Fencing was completed on the Manor of Rochdale Commons (6,200m) and bare peat restoration work was completed across the project area. Further Secretary of State consent has been sought for additional fencing and cattle grids.

### **Clough Woodland Project**

1,200 hectares of priority planting sites to create this habitat were identified and over 600 hectares were included in applications for the English Woodland Grant Scheme. The project has been extended to cover the whole of the Moors for the Future core work area, with a formal intention from the partners to work for the period covered by the Moors for the Future Business Plan. We will report to Audit Resources and Performance Committee with an outline plan of suggested planting areas.

### **Private Lands Project**

This extensive series of projects started this year within the following agreements:

- **Crowden**  
Initial bare peat stabilisation works were undertaken, with 3,500 bags of heather brash flown onto site and spread. Initial treatment with lime, seed and fertiliser has been planned and programmed in.
- **Langsett and Ladycross**  
We responded quickly to a request from the agreement holder to undertake 40ha of Lime, seed and fertiliser associated with bare peat stabilisation works on the site, which we completed as part of the wider programme.
- **Moscar**  
2.5 km of footpath restoration works, and associated bare peat stabilisation works on Whinston Lee Tor on Moscar were completed and the additional project on the Cutthroat bridge bridleway, working with Derbyshire County Council repairing (1.5 km), was consulted on and completed. Extensive archaeological investigations were undertaken through this. A small trial area of gully blocking work was undertaken, including blocking of sub-soil gullies, with an extensive monitoring programme underway.
- **Peaknaze**  
Works started on this project, with 750 bags of heather brash applied on during the winter period.
- **Saddleworth**  
Bare peat stabilisation work continued on Saddleworth, with further applications of lime and fertiliser to 186ha and follow-up treatments with 2000 bags of heather brash. Peat and heather bale dams were constructed within 13km of actively eroding gully systems.

We also completed capital works plans for new HLS agreements on Deer Hill Moss, Meltham, Stalybridge Estates and The Roych.

### **Science Team – achievements 2014/15**

This year the MFFP science team has been working to:

- evidence the impact / success of capital restoration works
- research and development into new restoration land management initiatives / practices
- advance understanding of moorlands and their functioning
- undertake long-term monitoring of biodiversity and ecosystem service change

We continue the delivery of landscape-scale science projects that evidence the impacts of blanket bog restoration work on biodiversity and ecosystem service provision (see table below). These projects form an integrated monitoring programme at MFFP through reference sites with shared methodologies. Two of the projects, our Defra demonstration catchment project, Making Space for Water, and the Peatland Restoration (Catchment Restoration Fund) project are both located within the same water body catchment. This has provided us with the opportunity to link these projects, instrument up this catchment for hydrological monitoring and as a result set up a demonstration water body catchment, the River Ashop, at a policy relevant scale; additionally we are using the latest technologies to enable remote data downloads to cut fieldwork costs in the future.

The MFFP science team have also been working very closely with the MFFP communications team on the delivery of the Community Science Project and also took on the project management of the entire Dark Peak Nature Improvement Area from the RSPB in May.

#### **Landscape-scale monitoring projects evidencing the impact of blanket bog restoration on biodiversity and ecosystem services**

<b>Project</b>	<b>Academic Collaboration</b>	<b>Focus</b>	<b>End</b>
<b>Moscar Science Project</b>	-	Economics, biodiversity	2015
<b>Woodhead Gully Blocking Monitoring Project</b>	Manchester	Flood risk, water quality	2015
<b>MoorLIFE</b>	Manchester	Biodiversity (Sphagnum)	2015
<b>Kinder Catchment Project</b>	Manchester	Water Quality (storms)	2015
<b>Making Space for Water</b>	Manchester	Flood risk	2015
<b>Dark Peak Nature Improvement Area</b>	Sheffield	Biodiversity	2015
<b>Ashop Demonstration Catchment (CRF)</b>	-	Water quality, carbon	2015
<b>Community Science Project</b>	York	Biodiversity citizen science	2017

A significant area of work for us is Research Facilitation. Through this service we support academic initiatives and student projects through logistical advice and support, data provision, funding, hosting student placements and projects, and collaborative working.

We also continue to support our restoration team by virtue of our science programme, through initiatives to provide evidence for future restoration methods and best practice. For example management of historic restoration sites plus a continued role in monitoring for *Phytophthora pseudosyringae* on bilberry on potential heather brush donor sites that is to be used as part of the restoration process with the National Park.

#### **Project work**

We had seven landscape-scale monitoring projects running this year. These projects all aim to evidence the impact of our moorland restoration work and the impact of vegetation cover, on a range of potential benefits provided by moorlands (ecosystem services), specifically: biodiversity, water quality, water provision, flood risk and fluvial carbon losses. The current funding phase of all of these projects comes to an end in March 2015. This year was a major data analysis and reporting year for the Science Team.

#### **Other Projects**

- Evidencing the impact of moorland restoration work on SSSI condition status in the South Pennines. Yorkshire Water and Natural England, 2014.
- Diversification of *Molinia* swards using *Sphagnum* propagules. Delivered in collaboration with MFFP Conservation and Land Management team (Yorkshire Water SSSI Recovery Project); Natural England and Yorkshire Water, 2014.

### **Research Facilitation**

#### **Collaborative Projects**

We have continued our collaboration with the Adapting to the Challenges of Changing Environment (ACCE) training programme. ACCE is a NERC funded doctoral training partnership led by the Universities of Sheffield, York and Liverpool, with the NERC Centre for Ecology and Hydrology. The aim of the programme is to train researchers of the future to understand and solve fundamental and applied environmental and ecological questions of national and global importance. MFFP are partners in this initiative and our involvement as such will include co-supervision of students, offering internships and potentially specific training opportunities (e.g. access to field sites, attendance at career workshops).

#### **Student research collaborations**

This year we continued collaborations (funding partner, supervision) on five doctoral studentships

Four will be completed this year.

- *Fluvial Carbon dynamics in restored peatland catchments: implications for water supply.*  
Andrew Stimson, University of Manchester  
Effect of catchment-scale peatland restoration (reseeding and gully blocking) on headwater fluvial carbon flux.
- *Carbon, communities and contestation*  
Dylan Young, University of Leeds  
Resilience of moorlands and future land management of restoration sites
- *Impact of local residential and renewable energy development on moorland bird populations in the SPM SPA*  
Chris Harrison, Manchester Metropolitan University  
Impact of local development (including micro-wind turbines) on breeding birds in SPM SPA
- *Restoration and recovery of Sphagnum on degraded blanket bog*  
Angus Rosenburgh, Manchester Metropolitan University
- *Cultural and educational services from green-space: does biodiversity matter*  
Debbie Coldwell, University of Sheffield  
Importance of biodiversity in delivering cultural and educational ecosystem services  
- ends 2016.

This year we have administered funding towards two student projects from Manchester Metropolitan University through funding from Kirklees, Bradford and Calderdale Metropolitan Borough Councils to support the research carried out within the PhD of Chris Harrison (MMU):

- *Assessing the impact of small wind turbines on moorland bird populations in the habitat fringe of a Special Protected Area*  
Tom Squires, Manchester Metropolitan University
- *Patterns of movement and habitat use by moorland birds across a moorland-fringe habitat transition zone, South Pennine Moors Special Protection Area*  
Wayne Donnar, Manchester Metropolitan University

Masters Projects:

One ongoing Masters Project funded by MFFP:  
*Sphagnum restoration on degraded blanket bog*  
Joshua Riggs, Manchester Metropolitan University

Completed Masters Project supported by MFFP:  
*Variations in Sphagnum occurrence on intact and eroded blanket bog*  
Karen Rogers, Manchester Metropolitan University/Birmingham University

## **Funding Proposals**

Funding proposals submitted / supported this year include:

- *Climate change and communities: local climate resilient futures: action research and evaluation*  
MFFP, University of Leeds, University of Nottingham, National Flood Forum  
Joseph Rowntree Foundation  
Not funded
- *Place-based Payment for Ecosystem Services Scheme for the Dark Peak*  
MFFP, URS, University of Manchester, University of Leeds, University of Durham, IUCN UK  
Defra  
Not funded

- Soil Security Research Programme: TOPSOIL consortium  
University of Leeds, University of York and University of Aberdeen  
NERC  
Awaiting outcome
- *Developing Manchester based expertise in interdisciplinary study of terrestrial carbon cycling*  
University of Manchester, MFFP  
University of Manchester Research Initiative  
Awaiting outcome

### **Programme Management – achievements 2014/15**

Our staff of 4.6 wte permanent, 21.8 fixed term and 34 casual posts delivered projects with a value >£3.3m. In addition we delivered £975k of work on a project management basis for Yorkshire Water Services.

We negotiated, tendered, contracted, and processed financial transactions with more than 100 contractors and suppliers and drew down funds/made claims amounting to £3.04m. The first claim from HLF for the delivery phase of the Community Science Project was made. A methodology for claiming from Natural England's Higher Level Stewardship scheme (Private Lands Project) was proposed and accepted.

We reviewed and updated our GIS filing structure, produced a GIS user guide and filing protocol, revised our project start up process and produced a casuals' handbook.

Our Project Management toolkit was enhanced enabling consistent recording and monitoring methods to continue.

Training in MS Project, Excel and Access; GIS software, financial management, English language, ecological identification and individual coaching was undertaken.

Four Partnership Strategic Management Group meetings and a workshop on business development and our future Strategy document took place during the year.

There have been approximately 8,332 hours of work undertaken by casuals between March and October 2014 with 6 Research Assistants being recruited to 'top up' the casual pool.

The cross-project way of working continues to enable us to use resources efficiently and gives us resilience in our programme management.

#### **Staff changes during the year:**

##### **Starting**

Katy Sunter (Senior Conservation Works Officer), Jamie Freestone (Conservation Works Officer), a Community Science Communications Officer and a Community Science Officer were appointed during the year. We intend to recruit a Project Administrator in 2014/15 to undertake claims which are increasingly complex and across multiple projects.

##### **Moving**

Sarah Proctor was appointed Community Science Project Manager.

A number of projects were completed in 2014/15 with the associated project staff posts coming to an end.

## **4      This year's Activity – 2015/16**

Many of the projects that were undertaken in 2014/15 came to an end at the end of the financial year, in March. Several projects are due to start in 2015/16, although confirmation of secured funding has not yet come through.

### **Continuing Projects**

#### **MoorLIFE**

The project has had an extension which means that the following pieces of work will continue into 2015/16:

- Final project report
- Press releases, layman's report and disseminate work focussing on key strategic outcomes delivered by the project across the five years.
- Lime and fertiliser application work with final treatments during July.

#### **Clough Woodland Project**

The Clough Woodland Project will develop further planting schemes identified in 2014. Further work will be undertaken to promote the importance of clough woodland and to engage with smaller landowners, prior to the development of other schemes as transition arrangements for funding become available. We will report to Audit Resources and Performance Committee with an outline plan of suggested planting areas.

The project will develop best practice guidelines and undertake prioritisation analyses for other Environment Agency regions within the National Park and across the South Pennines. We will continue to promote the project using the MFFP website and local and national press and will continue to develop our promotional material. We will continue to monitor the impacts of clough woodland planting in the Ashop and Alport catchments on flood risk mitigation and water quality subject to the success of a funding proposal to the Woodland Trust.

#### **Community Science Project**

In the Community Science Project we will:

- Roll out a programme of citizen science in the Dark Peak and South Pennines, collecting vital data for national climate change initiatives. This will involve opportunistic surveys; targeted and environmental monitoring.
- Recruit volunteers from local communities and groups as outlined in the audience development plan;
- Develop volunteers with varying levels of time-commitment to participate in science and learn new skills;
- Explore and grow new social media and digital opportunities such as online forums;
- Implement the first year of the activity plan; building on lessons learnt in the development phase.

#### **National Trust Projects**

We will be continuing our works with the National Trust Marsden Moor and High Peak Estates, undertaking lime and fertiliser application on Wessenden, Close Moss and Park Hall on Kinder. Potential work includes delivery of lime and fertiliser applications on Alport, Ashop and East Crowden.

#### **Private Lands Project**

Works will continue on Crowden, Saddleworth, Peaknaze and Moscar. Works will commence on, or agreements will be completed for, Stalybridge, Mossy Lee, The Roych, Deer Hill Moss, Meltham, Woodhead and Wessenden Head.

We will continue to promote the works of the project using the MFFP website and local and national press, in consultation with Natural England and the relevant landowners.

## **Research Facilitation**

### **Student research collaborations**

- *Cultural and educational services from green-space: does biodiversity matter*  
Debbie Coldwell, University of Sheffield, 2015  
Importance of biodiversity in delivering cultural and educational ecosystem services

## **South Pennines Commons**

The works on the South Pennines Commons sites will be entering their third year with revegetation work and gully blocking works continuing and current plans will finish in December. Further plans will be written and submitted as required for the Commons.

## **New and Unconfirmed projects**

### **Making Space for Water**

We have asked for additional funding from Defra to continue the science project monitoring the capital works undertaken on the Edge on Kinder. We continue to investigate and develop funding proposals to UK Research Councils in collaboration with academic institutions.

### **MoorLIFE 2020**

The MoorLIFE 2020 project, if successful, will be awarded in May 2015, with work commencing in July 2015. MoorLIFE2020 will have significant works for all of the Partnership teams. If successful the MoorLIFE 2020 project will provide the resources required to extend the monitoring on existing MFFP monitoring sites.

During the first year of the project, we will complete the following actions:

- Recruitment of project team;
- Development of Integrated Project Plan and Objective plans;
- Undertaking contracting for all feasible works through the life of the project;
- Undertaking landowner and agency consents to capital works
- Development of Approved Code of Good Practice for Active Blanket Bog and associated supporting materials with stake-holders;
- Development of project website;
- Develop landowner and stakeholder engagement plan
- Plan and set up an extensive programme of monitoring the impacts of capital works on biodiversity and ecosystem services

## **Yorkshire Water Projects**

Our current contract to deliver works for Yorkshire Water Services, for the SSSI Recovery Project, ends in March 2015. A full programme for AMP6 was prepared in 2012 and we envisage that works will continue beyond 2015. We will tender for contract management for YWS when calls are released.

### **Programme outputs**

- Collate results for separate reports to produce shared 'big messages'
- Preparation of scientific papers for peer-reviewed journals

### **Collaborating partner outputs**

- Expected peer reviewed publications from PhD student collaborations

### **Presentations (oral, posters)**

- Society for Ecological Restoration Conference, Manchester
- Proposal to the Linnaean Society in collaboration with British Ecological Society

## **Funding Proposals**

MFFP will continue to investigate external funding opportunities towards the delivery of our vision, aims and objectives.



## **Programme Management - 2015/16**

Table 2: Core and Project Funding 2015/16

Contracted/approved	Core funding £	Core funding from projects £	Total core funding £
<b>Operational Partners</b>			
PDNPA	88,000		88,000
Environment Agency			
Severn Trent	15,000		15,000
United Utilities			
Sub total	103,000	0	103,000
<b>Project Partners</b>			
EU LIFE			
HLF		3,500	3,500
National Trust			
Natural England		20,500	20,500
RSPB			
S Pennines Commons		800	800
Yorkshire Water			
Sub total	0	24,800	24,800
<b>Total</b>	<b>103,000</b>	<b>24,800</b>	<b>127,800</b>

Pipeline	Core funding £	Core funding from projects £	Total core funding £
<b>Operational Partners</b>			
PDNPA			
Derbyshire CC	20,000		20,000
Environment Agency	60,000		60,000
Severn Trent			
United Utilities	15,000		15,000
Sub total	95,000	0	95,000
<b>Project Partners</b>			
EU LIFE		23,750	23,750
National Trust		2,000	2,000
Pennine Prospects		2,000	2,000
RSPB		2,000	2,000
Woodland Trust			
Yorkshire Water			
Sub total	0	29,750	29,750
<b>Total</b>	<b>95,000</b>	<b>54,550</b>	<b>149,550</b>

Our establishment costs are c.£250,000 - to support a core team of 4.6 permanent staff with additional technical, research and administration staff assistance where required.

The Core team:

Partnership Manager - Chris Dean

Communication Programme Manager - Louise Turner

Programme Manager – Conservation Land Management - Matt Buckler

Programme Office Manager – Sharon Davison

Science Programme Manager – Jonathan Walker

### The core team covers

- Business development and leadership
- Advocacy and opportunity creation
- Providing expert advice, techniques and methodologies on topic areas which Moors for the Future Partnership has developed
- Programme management and logistics
- Communications and website development
- Staff management, recruitment and induction
- Trouble shooting and emergency cover
- Financial monitoring and management
- Setting and monitoring protocols

The final report and financial claim will be made for the MoorLIFE Project, with a pre-project financing being made if successful with the MoorLIFE2020 grant application. Reports and claims continue to be made for the Community Science, South Pennines Commons and Private Lands projects.

Table 3: Projects 2015/16

Projects contracted/approved	ARP Minute Reference	Anticipated gross expenditure of project work 2015/16 £	Funders
MoorLIFE	49/09 (Services)	70,000	PDNPA, EU Life, EA, NT, UU, YWS
Moscar Science	RMT 55	40,000	NE
Clough Woodland	40/14	15,000	EA
Community Science	39/14	239,135	HLF, EA, NE, NT, RSPB, STW, UU, YWS
Castleshaw Common	64/12	46,772	NT
South Pennines Commons	09/10 (Services)	300,865	
Private Lands	48/13	1,118,492	NE
Sub total		1,830,264	
Pipeline – subject to relevant approval			
Clough Woodland	40/14	23,000	NT, WT
MoorLIFE 2020		2,600,000	PDNPA, EU LIFE, STW, UU, YWS, NT, PP, RSPB
Sub total		2,623,000	
<b>Total</b>		<b>4,453,264</b>	

Partners (abbreviations where used):

PDNPA Peak District

EU LIFE European Commission - Environment - LIFE Programme

EA Environment Agency

HLF Heritage Lottery Fund

NE	Natural England
NT	National Trust
PP	Pennine Prospects
STW	Severn Trent Water
UU	United Utilities
WT	Woodland Trust
YWS	Yorkshire Water Services

### **Project Teams**

At the time of writing, 18.4 wte fixed terms posts (20 members of staff) are due to end at the end of March 2015 or during the financial year.

Negotiations with partners are currently underway and funding bids are being developed to continue projects and develop new work (see 'Look Forward' – below).

To deliver the MoorLIFE2020 Project we will be recruiting up to 20 (18.3wte) posts during the year; recruitment will commence in May/June (once agreements are in place).

### **Advocacy and events**

The team will continue to represent the Moors for the Future Partnership and its interests at a wide range of relevant regional and national meetings and initiatives and disseminate our scientific findings generated from our research and monitoring programme to best evidence future land management initiatives and best practice.

### **Training and Development**

The Moors for the Future Partnership is a learning organisation which is pioneering innovation in the science of moorland remediation and management. We will continue to develop the skills and capability of our staff as identified in the annual learning and development plans.

The programme team will review MFFP strategic business documents (including this operational plan) to reflect stakeholder needs and the new vision and strategy.

## **Risk Assessment**

Programme Management risks are monitored on a quarterly basis. Any changes in risk will be identified to PDNPA (as lead partner) and significant risks highlighted on the Directorate and/or Corporate Risk Register. Strategic Management Group will be advised. In addition, individual project risks are identified on the Programme Progress Log and reviewed bi-monthly.

<b>Description of Risk</b>	<b>Impact on Programme</b>	<b>Impact (I)</b>	<b>Probability (P)</b>	<b>Risk Rating</b>	<b>Mitigating Actions</b>
Long term staff sickness	Programme management and delivery affected	2	2	4	Staff trained and appropriate skills base to backfill.
Staff recruitment / retention	Programme management and delivery affected	2	3	6	Adequate project support particularly during final months of projects.
IT – inadequate server back up (loss of data)	Business continuity adversely affected. Loss of historic data	3	2	6	Fit for purpose back up system installed during 2014
Insufficient / inadequate accommodation	Loss of time dedicated to programme management / delivery	2	3	6	Monitor workspace management. Work is underway to identify options for accommodation and/or alternative working arrangements.
Failure to plan resources for multiple projects	Project(s) fail to meet delivery objectives	3	1	3	Gateway approval process and project management toolkit in place. Monitoring and communication in conjunction with work planning across portfolio. Issues identified, support put in place.
Lack of PDNPA Committee Support	Approval for projects (pre-project set up work time wasted)	3	1	3	Strong lines of communication with Members. Identify Champion(s). RMT 'pre Committee' process adds robustness.
Failure to maintain core income	Programme management affected. Bidding for future work and funding impacted	3	1	3	Funding opportunities with strategic focus identified and followed up as appropriate. Reduce hours/redundancy of core team. Financial contingency in place.
Failure to obtain funding	Programme delivery affected	3	1	3	Adapt projects/programme to deliver within resources.
Failure to engage partners	Current and future projects	2	1	2	Robust Action Plan; active engagement, communication and awareness raising

Formula used for assessing Risk Rating

<b>Impact</b>		<b>Probability</b>	
1	Insignificant / Negligible	1	Very Unlikely / Rare
2	Moderate	2	Possible
3	Critical / Catastrophic	3	Almost Certain

## **5 Look Forward – 2016/17**

### **Awareness Raising – Commitments 2016/17**

Deliver year 2 plans of the Community Science Project, MoorLIFE 2020 and support the Private Lands Project.

Continue to support our innovative conservation and science programmes through partnership communication vehicles and channels as well as developing campaigns at a regional, national and international level.

Identify and secure communication project and funding streams through new business and programme opportunities. We will seek and harness funds to secure and protect the legacy of the MFFP through further public and landowner engagement.

Seek and aid new partnership ventures to conserve and promote our moorland uplands.

### **Conservation and Land Management - Commitments 2016/17**

Currently, the following projects are proposed through 2016/17:

#### **Clough Woodland Project**

In 2015 the New Environmental Land Management Scheme (NELMS) will come into operation, which will integrate agri-environment and forestry schemes. We envisage that the Clough Woodland project will continue in 2016/17 with a solid body of evidence supporting the concept developed to this date and plans and grant applications being delivered as part of any NELMS applications.

#### **MoorLIFE 2020 Project**

During 2014/15, we have developed the MoorLIFE 2020 project which will continue in the 2016/17 Financial Year.

#### **National Trust works**

We hope to work with NT to further develop their proposals for follow-up plans.

#### **Private Lands Project**

Works on the HLS schemes will be entering their third year and the project will be continuing. Follow-up schemes will be required for the earliest projects.

### **Science Programme - Commitments 2016/17**

The MFFP Science team work programme into this year is dependent on the outcome of funding bids submitted this year and in 2016/17

- We will continue to be a partner on the ACCE project, training the next generation of (moorland) scientists.
- If successful in our funding proposals, we will continue delivering a programme of projects evidencing the impact of blanket bog restoration on biodiversity and ecosystem services.
- We will continue to collaborate with the MFFP Communication team on the delivery of the Community Science Project
- If successful, we will deliver the monitoring within the MoorLIFE2020 Project.

Table 4 Core and Project Funding 2016/17

Contracted/approved	Core funding £	Core funding from projects £	Total core funding £
<b>Operational Partners</b>			
PDNPA	88,000		88,000
Environment Agency			
Severn Trent			
United Utilities			
Sub total	88,000	0	88,000
<b>Project Partners</b>			
HLF		4,500	4,500
Natural England		18,000	18,000
Sub total	0	22,500	22,500
<b>Total</b>	<b>88,000</b>	<b>22,500</b>	<b>110,500</b>

Pipeline	Core funding £	Core funding from projects £	Total core funding £
<b>Operational Partners</b>			
PDNPA			
Derbyshire CC	20,000		20,000
Environment Agency	60,000		60,000
Severn Trent	15,000		15,000
United Utilities	15,000		15,000
Sub total	110,000	0	110,000
<b>Project Partners</b>			
National Trust		2,000	2,000
Pennine Prospects		2,000	2,000
RSPB		2,000	2,000
Woodland Trust			
Yorkshire Water			
Sub total	0	6,000	6,000
<b>Total</b>	<b>110,000</b>	<b>6,000</b>	<b>116,000</b>

Table 5: Projects 2016/17

Projects contracted/ approved	ARP Minute Reference	Anticipated gross expenditure of project work 2016/17 £	Funders
Community Science	39/14	241,420	HLF, EA, NE, NT, RSPB, STW, UU, YWS
Private Lands	48/13	1,118,492	NE
Clough Woodland	40/14	15,000	EA
Pipeline – subject to relevant approval			
Clough Woodland	40/14	23,000	NT, WT
MoorLIFE 2020		2,600,000	PDNPA, EU Life, STW, UU, YWS, NT, PP, RSPB
<b>Total</b>		<b>3,997,912</b>	

## **6 Look forward - Business Development (Expectations)**

We will continue to develop relationships with new partners.

### **Core Funding**

We will continue to engage with core funding partners to establish new Statements of Intent and negotiate core funds / membership fees into the future.

Funds will be sought to develop the general infrastructure of the MFFP team, bidding for funds to improve processes and systems of work and infrastructure. This is required to fully expand the capabilities of the team to undertake extensive programmes of work.

Allocating resource to business development is crucial to ensuring we are continually aware of funding opportunities, always have a bidding action in development and always have a pipeline of priorities for funding opportunities within the Operational Plan.

The aim of the planning is to identify options and costs and develop proposals / bids or continuing our evidence programme of the impact of restoration and land management activities; this is important as many of the biodiversity and ecosystem service benefits will take many years to realise.

### **Constant funding vigilance**

The team will continue to keep funding opportunities under constant review and will explore all of those which have strong possibilities for funding the Partnership's objectives.

## **7 Monitoring this Operational Plan**

We produce a Programme Progress Log four times a year which identifies approvals and financial values of projects - with risks identified through a Red/Amber/Green assessment - and includes brief summaries of progress highlights. Income and Expenditure of the programme team are also monitored by the Partnership's Strategic Management Group at its meetings.

We update our funding approval records on a monthly basis to take account of the need of probity of the approvals processes of our accountable body, the Peak District National Park Authority.

Reports on individual projects are presented to those individual project steering groups and an overview of the programme finances is undertaken by the Peak District National Park Authority.

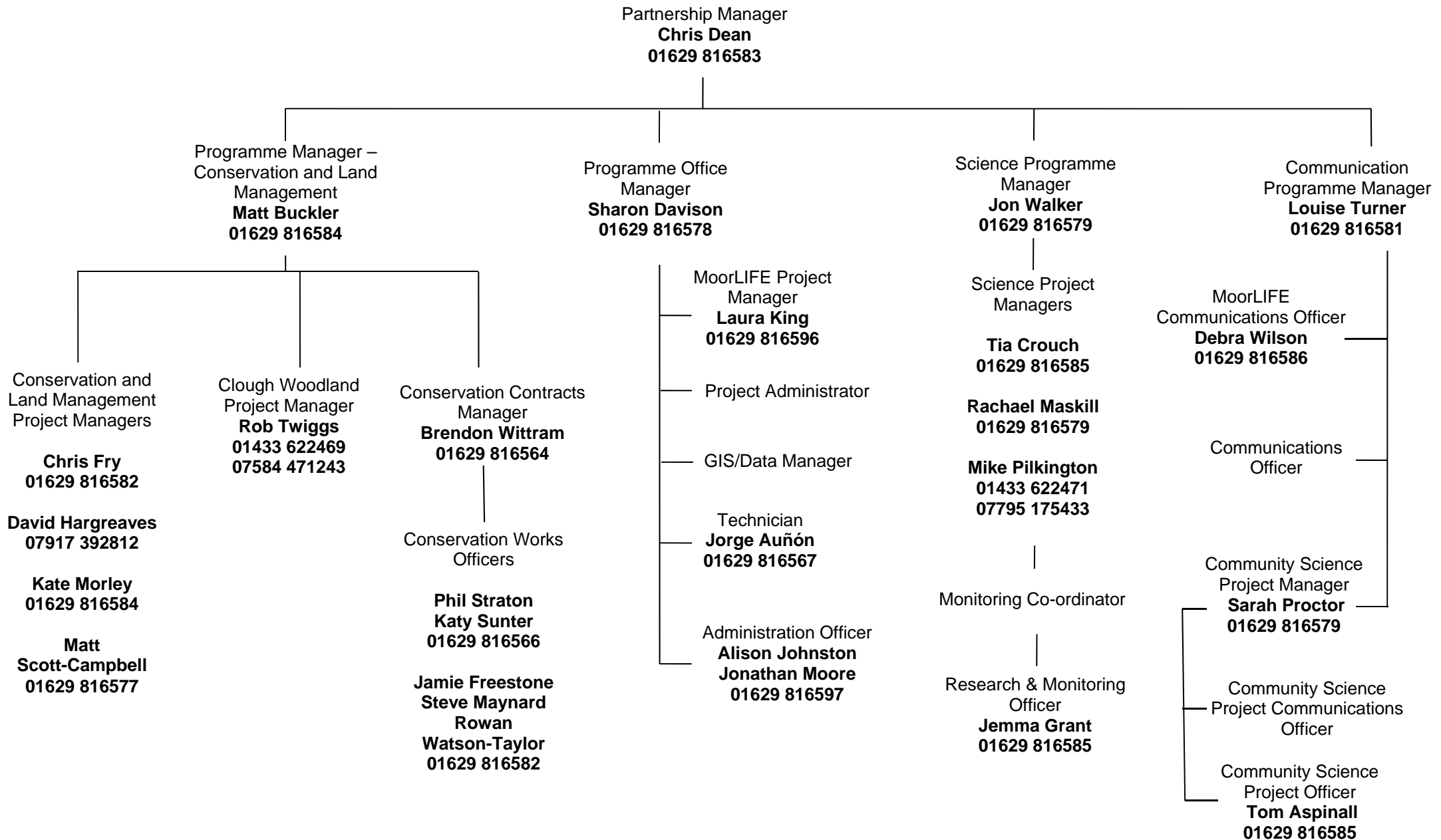
## **8 Developing Project Income**

We plan to make a bid to HLF Landscape Partnership Programme- as agreed by ARP Committee in the 2013/14 Operational Plan. We anticipate an Integrated Grant Application will be made by Defra to the 2015 Life fund which may provide an opportunity for the Partnership to deliver some aspects of the project.

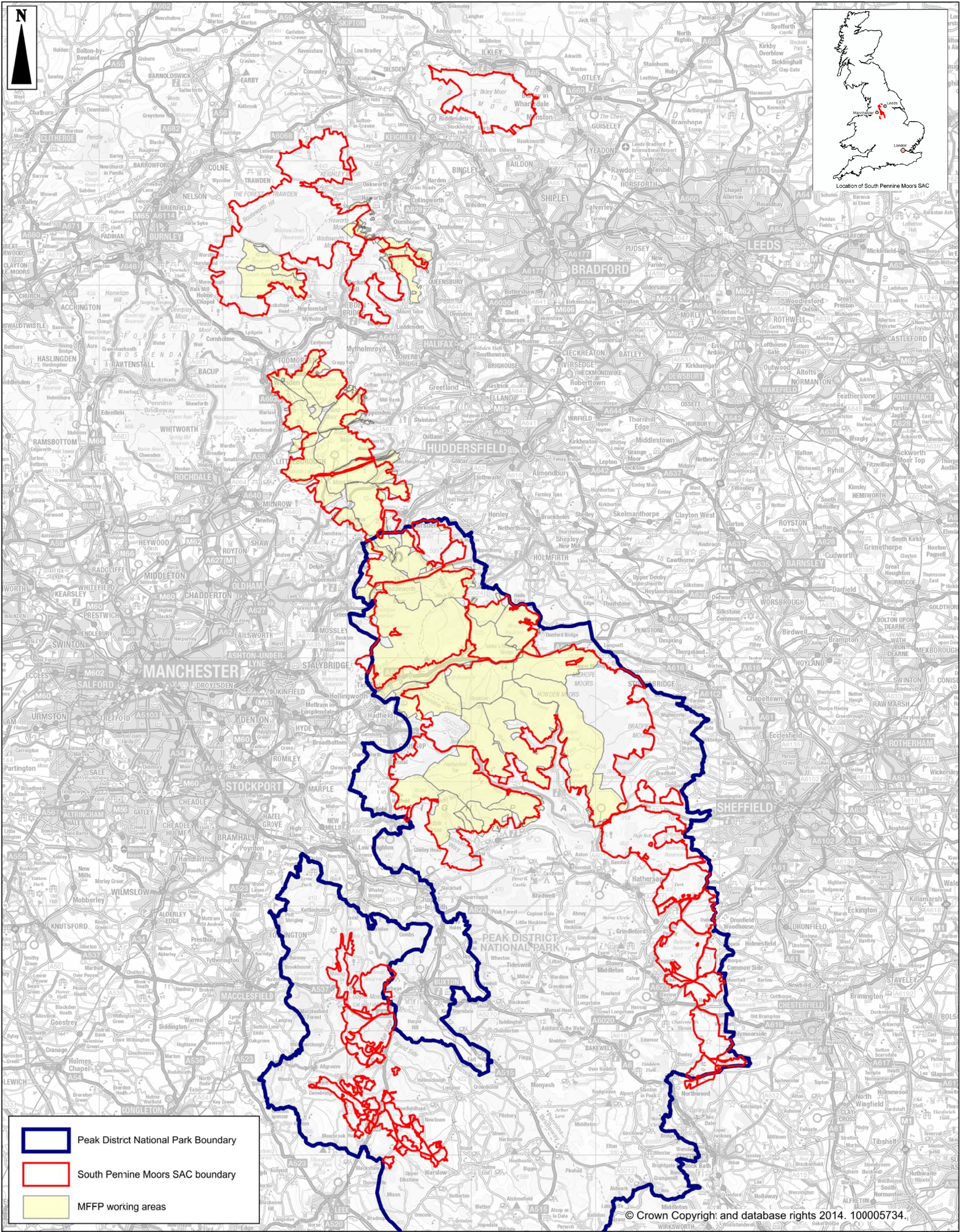


# MOORS FOR THE FUTURE PARTNERSHIP

Correct at 23 December 2014







-  Peak District National Park Boundary
-  South Pennine Moors SAC boundary
-  MFFP working areas

© Crown Copyright and database rights 2014. 100005734.



Scale: 1:275,000



**Moors for the Future Partnership**

The Moorland Centre  
Fieldhead  
Edale  
Hope Valley  
S33 7ZA

Tel: 01629 816581  
Email: [moors@peakdistrict.gov.uk](mailto:moors@peakdistrict.gov.uk)

[www.moorsforthefuture.org.uk](http://www.moorsforthefuture.org.uk)

Drawing Name:  
MFFP working area 2015/2016

Operational Plan

Drawn by:	JA	Date:	26/11/2014
-----------	----	-------	------------